



Touch Monitor 10

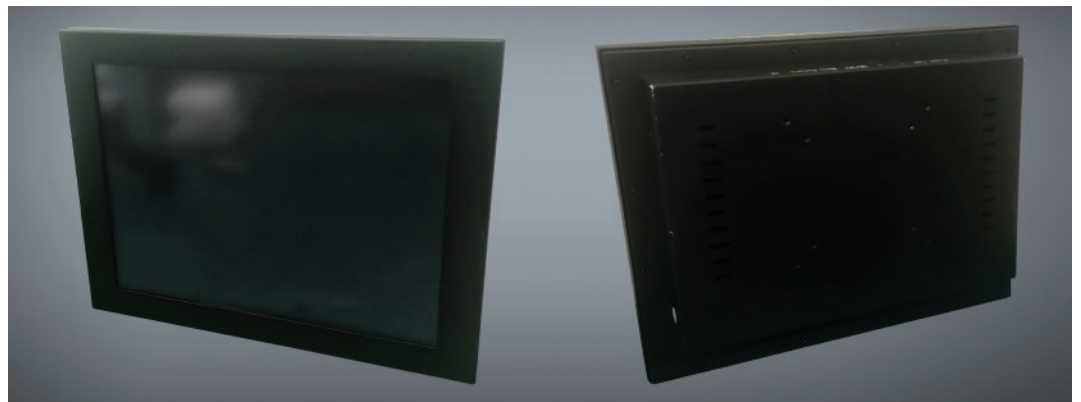
GENERAL FEATURES

Industrial touchscreen monitor on 10-inch TFT-LCD technology with a resolution of 800 x 600 pixels.

The monitor has a black metal chassis, it is small in size and it is designed for wall assembly by means of specific metal brackets or through the 4 VESA mounting holes located on the back of the chassis.

The video connection takes place via a VGA connector, whereas the touchscreen is managed through a specific USB connector.

The total display area is 155 x 210 mm, but the external sizes are 260*210*44 mm.



SPECIFICATIONS AND PERFORMANCES

Display Size	10" (155 x 210 mm)
Resolution	800 x 600 pixels
Colours	16,2 million
Brightness	300 cd/m2
Response Time	5 ms
Contrast	450:1
Angle of View	160° horizontal, 130° vertical
Connectors	VGA for video, USB for touchscreen
Weight	2 kg net, 3,5 kg gross
Touch Response Time	2 ms
Touch Type	resistive
Certifications	EC, RoHS, FCC
Frequency	30~80 kHz/ 60~75 Hz
Supply	DC 12V
Assembly	VESA or through metal brackets
Stock temperature	-20 C° ~ 70 C°
Working temperature	10 C° ~ 60 C°
Humidity	operating 20% ~ 80%, non-operating 10% ~ 90%

code PC2.0.02