



Touch Monitor 12

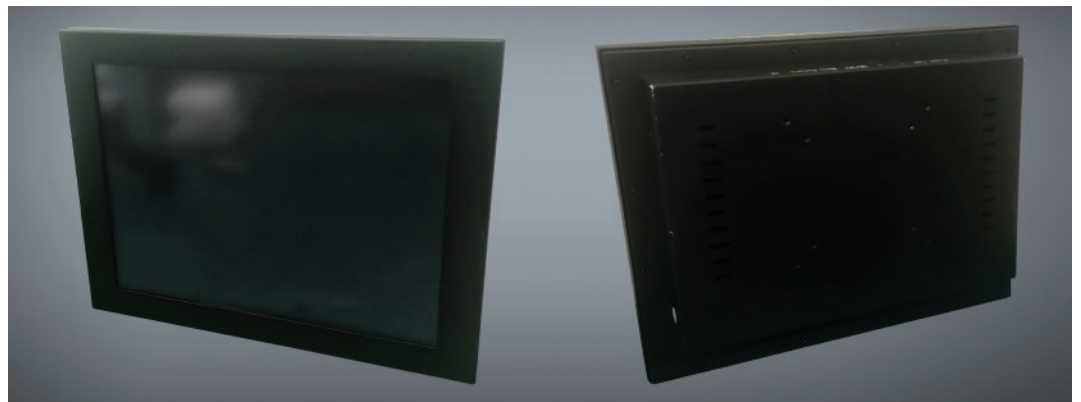
GENERAL FEATURES

Industrial touchscreen monitor on 12-inch TFT-LCD technology with a resolution of 1024 x 768 pixels.

The monitor has a black metal chassis, it is small in size and it is designed for wall assembly by means of specific metal brackets or through the 4 VESA mounting holes located on the back of the chassis.

The video connection takes place via a VGA connector, whereas the touchscreen is managed through a specific USB connector.

The total display area is 245 x 285 mm, but the external sizes are 300*245*44 mm.



SPECIFICATIONS AND PERFORMANCES

| | |
|---------------------|--|
| Display Size | 12" (245 x 285 mm) |
| Resolution | 1024 x 768 pixels |
| Colours | 16,2 million |
| Brightness | 300 cd/m ² |
| Response Time | 5 ms |
| Contrast | 450:1 |
| Angle of View | 160° horizontal, 130° vertical |
| Connectors | VGA for video, USB for touchscreen |
| Weight | 3 kg net, 4,5 kg gross |
| Touch Response Time | 2 ms |
| Touch Type | resistive |
| Certifications | CE, RoHS, FCC |
| Frequency | 30~80 kHz/ 60~75 Hz |
| Supply | DC 12V |
| Assembly | VESA or through metal brackets |
| Stock temperature | -20 C° ~ 70 C° |
| Working temperature | 10 C° ~ 60 C° |
| Humidity | operating 20% ~ 80%, non-operating 10% ~ 90% |

code PC2.0.03