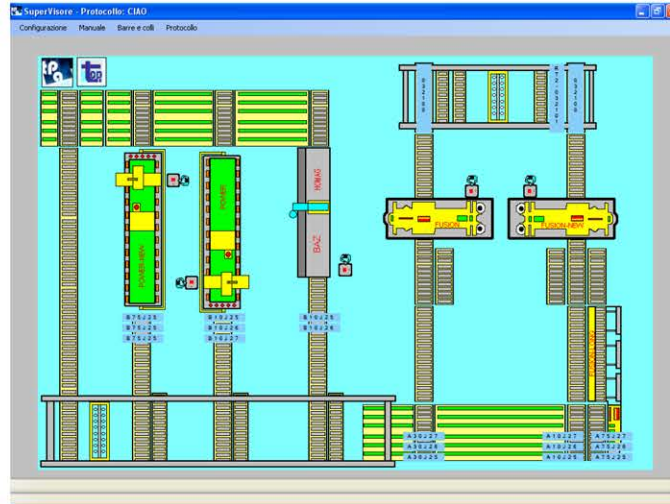




Plant Supervisor

GENERAL FEATURES

Plant Supervisor application program manages the sending of the commands to pick up the bars from the warehouse, to cut the bars and to machine the kitchen tops in the copy routers.



FUNCTIONAL CHARACTERISTICS

The input data are the bars which contain the tops in Albatros list format (Lister, Cnc2000, ..). Each production load contains the bars (lists) which must be picked up from the warehouse and sent to the cut-to-size saws.

The bars are picked up from the warehouse by a bridge crane or roller conveyors at the entrance (the command is in xml format). The sending of the bars to the cut-to-size saws is optimised in accordance to the work load and to the work typology of the bar itself.

When the bridge crane puts the bars on the roller conveyors at the entrance, the supervisor sends the list of the program to cut the bars and for the edge banding of the tops.

Through the supervisor you can modify the code of the bar (bar database), the length and the pre-cutting. You can also modify the dimensions and the edges at the entrance and at the exit of the single pieces/tops.

The tops at the exit of the cut-to-size saws are sent to the bridge crane, which sends the tops to the copy routers for the different workings (the commands are in xml format).

The top is associated to a specific copy router according to the workings to do. Through the configuration file, a copy router can carry out particular workings only.

In case of malfunctioning or maintenance, you can disable cut-to-size saws and copy routers.

Scraps can be uploaded and downloaded from the warehouse (commands in xml format).

According to the associated identifier, you can display the pick up bar, the copy router and the date of the working.

The protocols can be managed and therefore the production data can be backed up. Later you can completely restore the data or recover only some of the production lists.

All commands of the supervisor are recorded in a specific report.