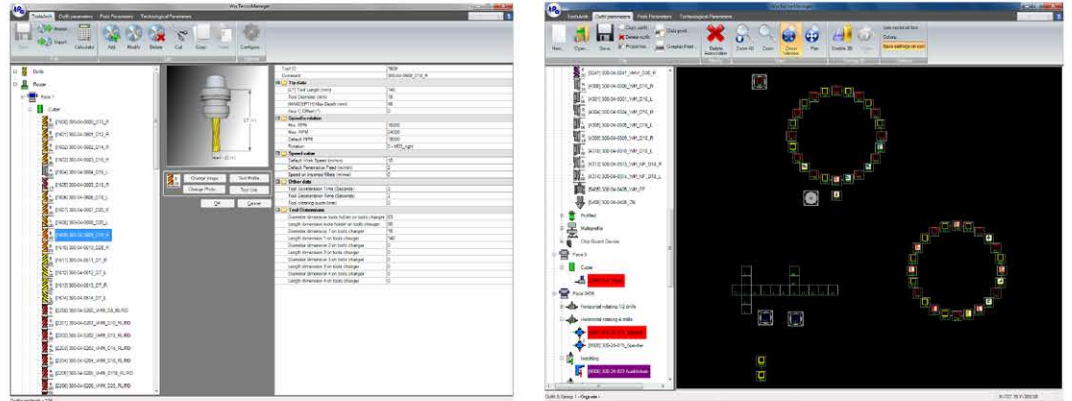




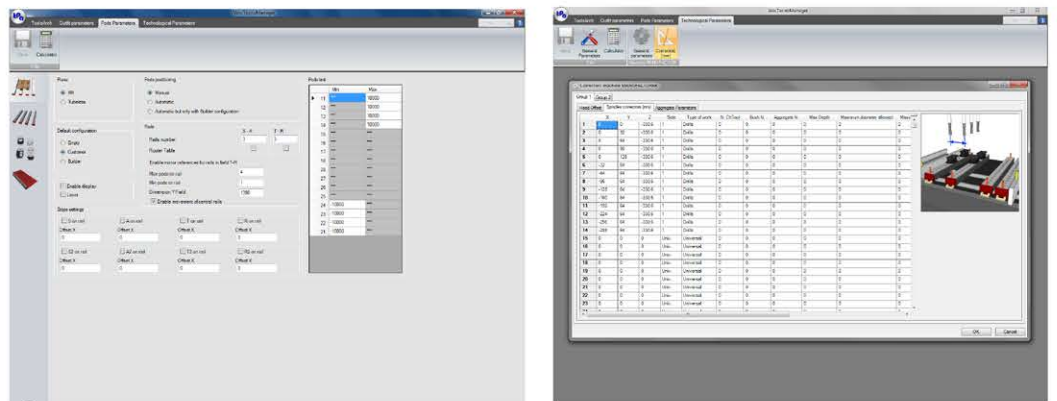
Tecnomanager

GENERAL FEATURES



Tecnomanager is the management software of the machine technology, which is essential for the use of the WSCM dashboard. The application contains all the tools required for the complete parametrization of a machine. In particular, it is possible to define all the characteristics related to the steps of:

- Creation a database of tools sorted by type (drills, milling cutters, blades etc.)
- Realization of multiple machine tooling in which each tool is associated with the reference bush or spindle, on which the tool is physically mounted. This tooling is executed by the user quickly and intuitively via drag&drop with the mouse.
- Definition of the parametrics of the work plan (number of crossmembers, database of the suction cups etc...)
- Definition of the technological architecture of the machine (composition of the head, tool changer carousels, dimensions of offset between spindles and dimensions of offset between work areas)



UTILITY

- A single software for complete management of the machine technology.
- Possibility to add images and/or photographs of the tools, for an immediate recognizability.
- High versatility of management of the various types of data characteristic of the machine and tools.
- Help images which clearly explain the meaning of the data that you wish to add.
- Ability to save and recall several tooling for each machine.
- Machine tooling is immediate since it is graphical and not textual.

The software is part of the WSCM suite where you can manage the technological parameters of the machine. Tecnomanager is therefore indispensable for all the manufacturers that want to configure and manage the machine in all its technological characteristics.