



WSCM

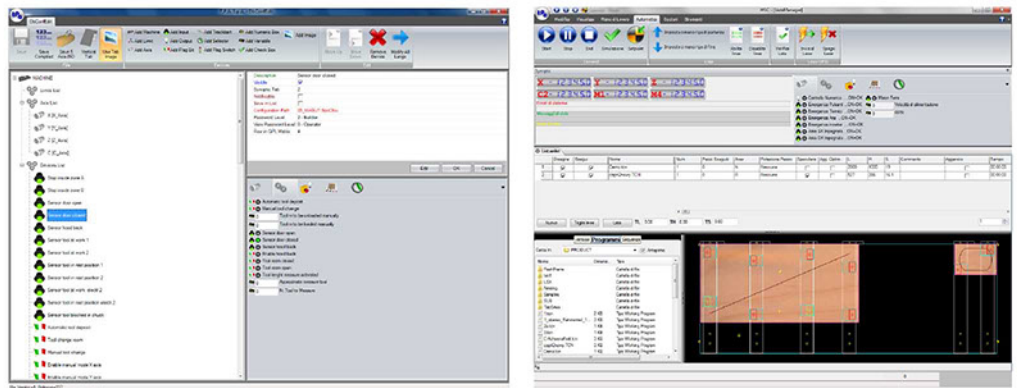
GENERAL FEATURES

WSCM is the main software for the management of the production cycle of the machine and of the work plan of the same.

The application, directly interfacing with the Albatros environment and, therefore, with the numerical control, offers all the functions to interact with the machine. It controls the panel processing operations, the setpoint procedure, the manual handling of one or more axes, the activation or deactivation of the physical devices and the management of the work plan.

One of the main features of the WSCM is a dashboard that allows direct access to the devices of the machine (Axes, digital I/Os, flag bits/switches, synoptics, cycle message notification, cycle errors and system errors).

The interfacing dashboard is fully configurable by the manufacturer through a dedicated application (DbConfEdit).



The interface between the operator and the machine consists of several elements:

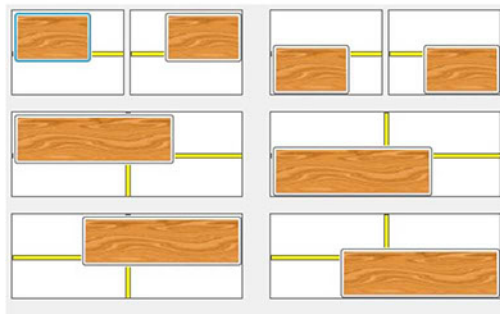
- Command area for the management of the work cycle of the machine
- Area for notification of messages, cycle errors and system errors
- Interactive dashboard for the display of the axes and the manual handling of the same
- Interactive dashboard containing all the devices that are configured
- Execution list in which to invoke the piece files that the machine will execute during the working cycle
- Command area for the management of the work cycle and of the work plan of the machine
- Interactive component for the management of the work plan

FUNCTIONAL FEATURES

WSCM, in the composition of the work list of the machine offers the ability to invoke individual programs and lists each of which includes multiple programs, thus exploiting the feature called "List of Lists".

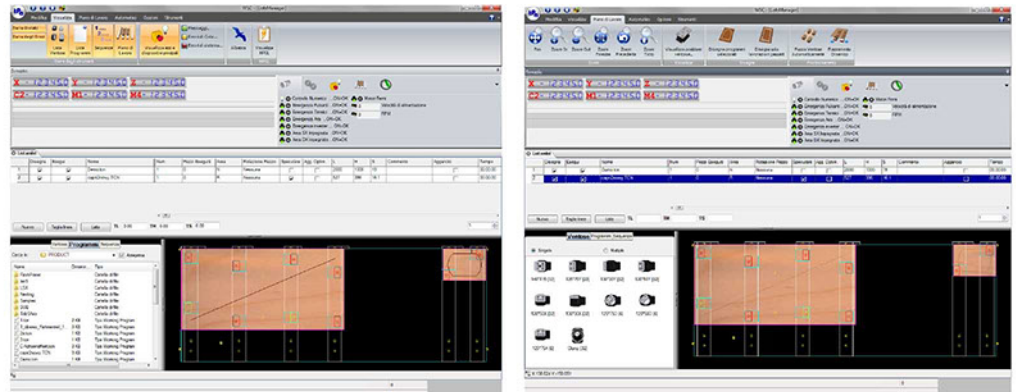
Interfacing with external programs, such as the BARCODE program, it is possible to compile and launch the execution of a list in a manner that is totally automatic, without the need for any additional controls by the operator. In this circumstance it is in fact possible to queue multiple programs, even while the list is being executed; this enables non-stop execution of processing, without stopping the work cycle. This feature is well suited for in-line machines, typically managed by a plant supervision station and/or management systems for the organization of production batches.

For each program the user can define a set of data, editable through the list itself, which is useful to provide the control with all the information necessary for the execution of the piece.



The interactivity of the dashboard provides the operator with the ability to interact with the configured machine devices.

A fundamental function of the WSCM is the management of the work plan of the machine.



The graphical environment for dashboard management is completely interactive. Through it, you can:

- Manage the work-flow optimization sequences
- Add and position the suction cups which lock the panels
- Place the crossmembers
- Directly import the programs, by dragging them to the desired area of the plan.
- Graphic preview of the piece and related processing that will be carried out on it.

UTILITY

- Direct interface between the operator and the machine.
- Total configurability of the devices of the machine, with which the operator can interact.
- Total configurability of the columns of the work list in which you can invoke the piece files.
- Quick commands to start, pause or stop the machine work cycle.
- Interface with external programs for automatic management of the work list.
- Total configurability of the work plan and of the devices "connected" to it.
- Graphical selection of the work areas, for each program in the list.
- Interactive management of the work plan thanks to the functionality (drag & drop) for the handling of crossmembers, suction cups and import of the panels in the related work area.

WSCM is a tool well suited to be used as an operator interface for any type of machine. The high degree of customization which can be reached by WSCM is a guarantee of adaptability to the diverse needs of the manufacturers.

The ability to manage a machine in terms of technology and work plan enables to use WSCM for work centres or for "stand-alone" machines.